



WELCOME

**Lakeview Waterfront
Connection EA**

**Public Information Centre #2
Evaluation and Selection of
Preferred Alternative**

April 3 2013



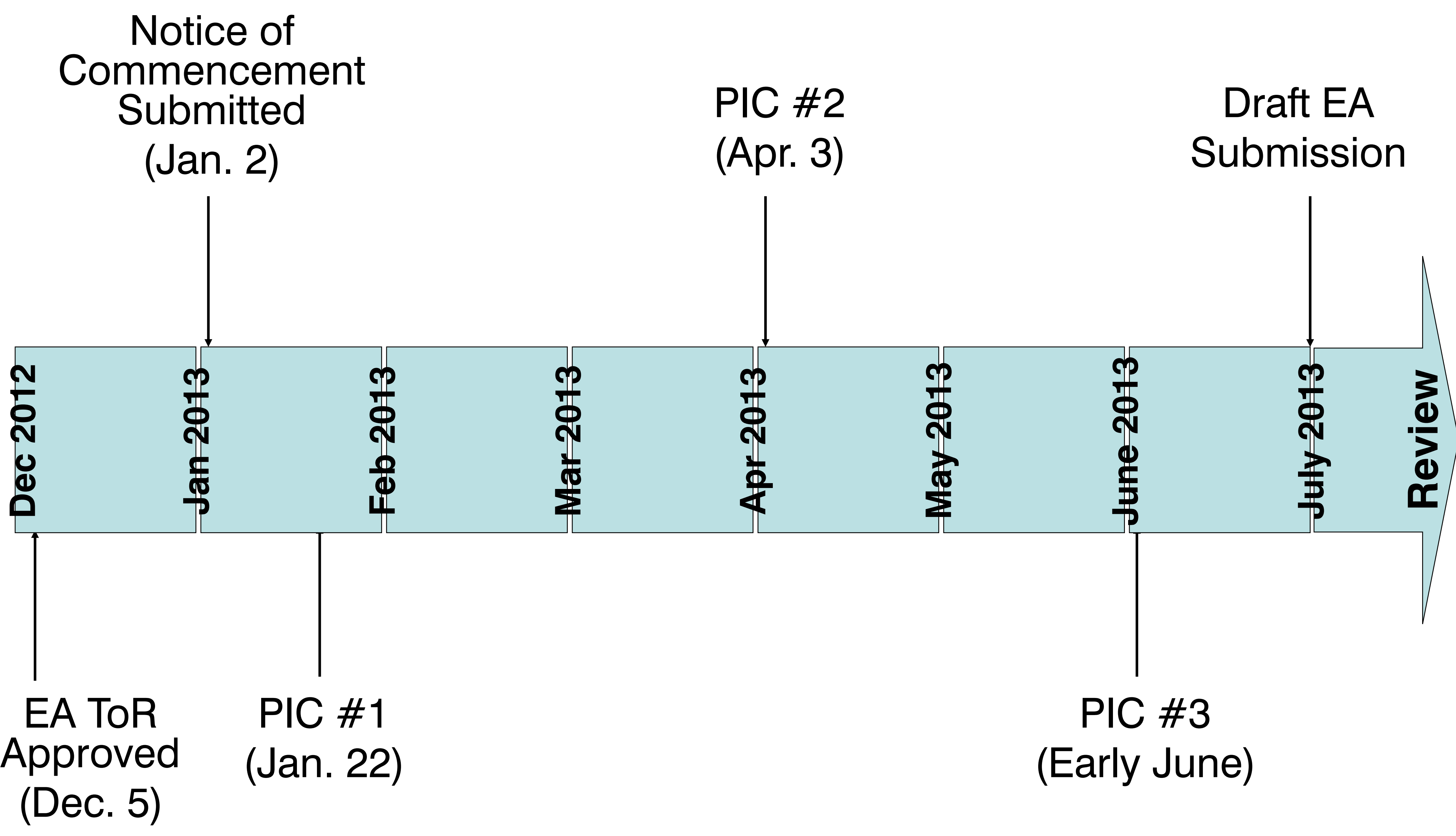
Meeting Purpose

To report back to the public on

- *the evaluation of the LWC Project Alternative Configurations;*
- *the identification of a preferred alternative;*
- *to seek comment on the evaluation and the selection of a preferred alternative;*
and
- *to discuss potential refinements to the preferred alternative.*

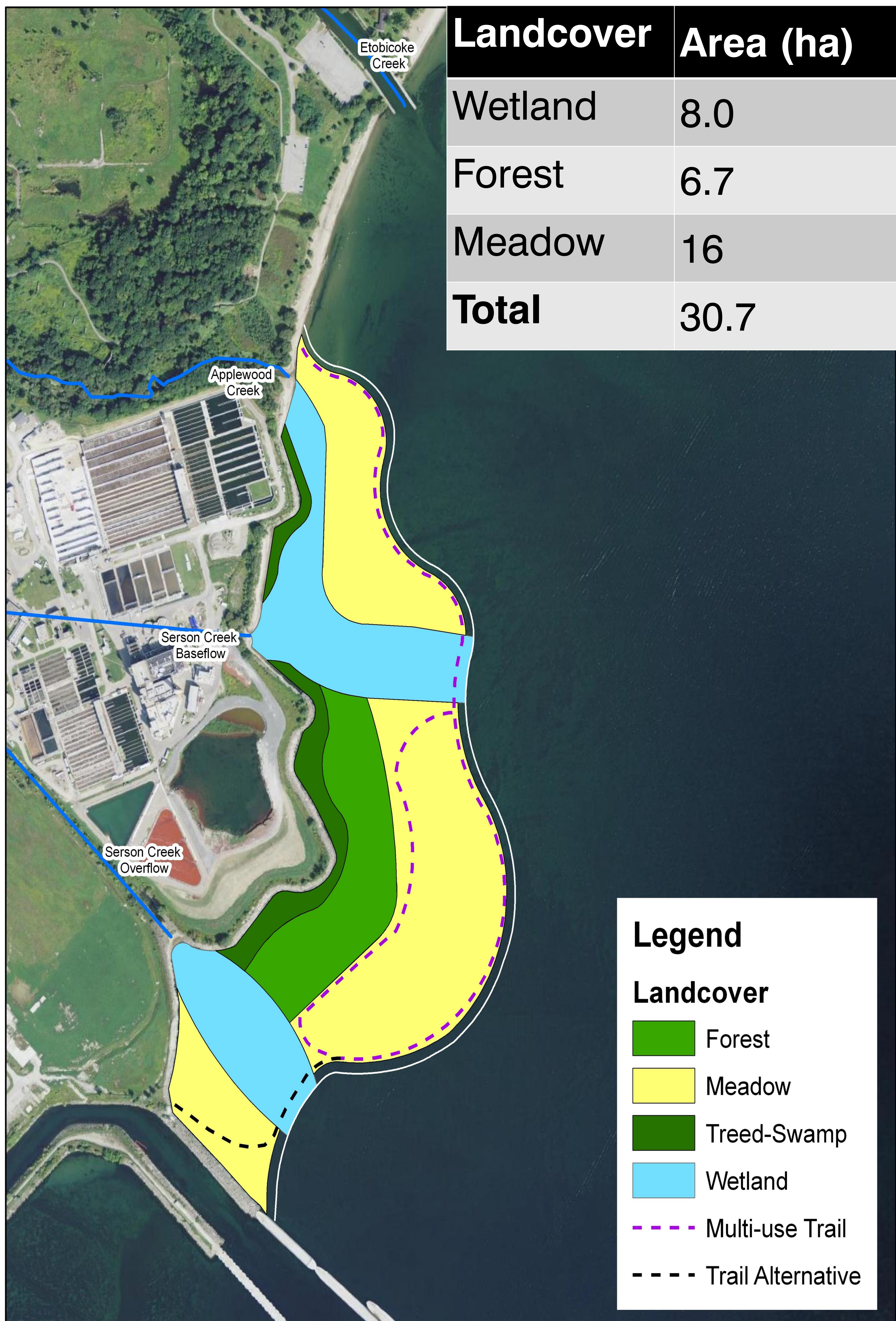


EA Status and Schedule



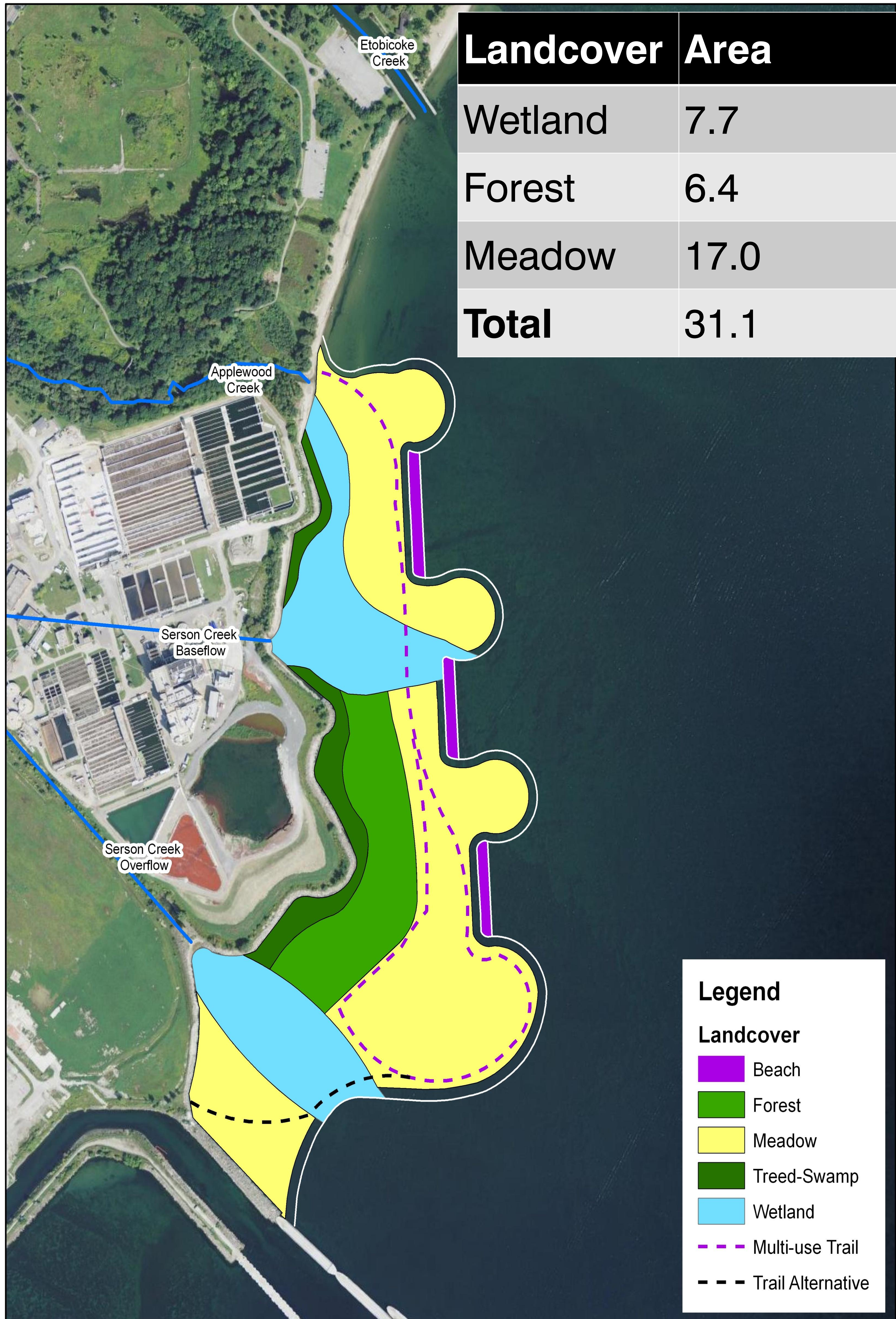


Alternative 1: Revetment

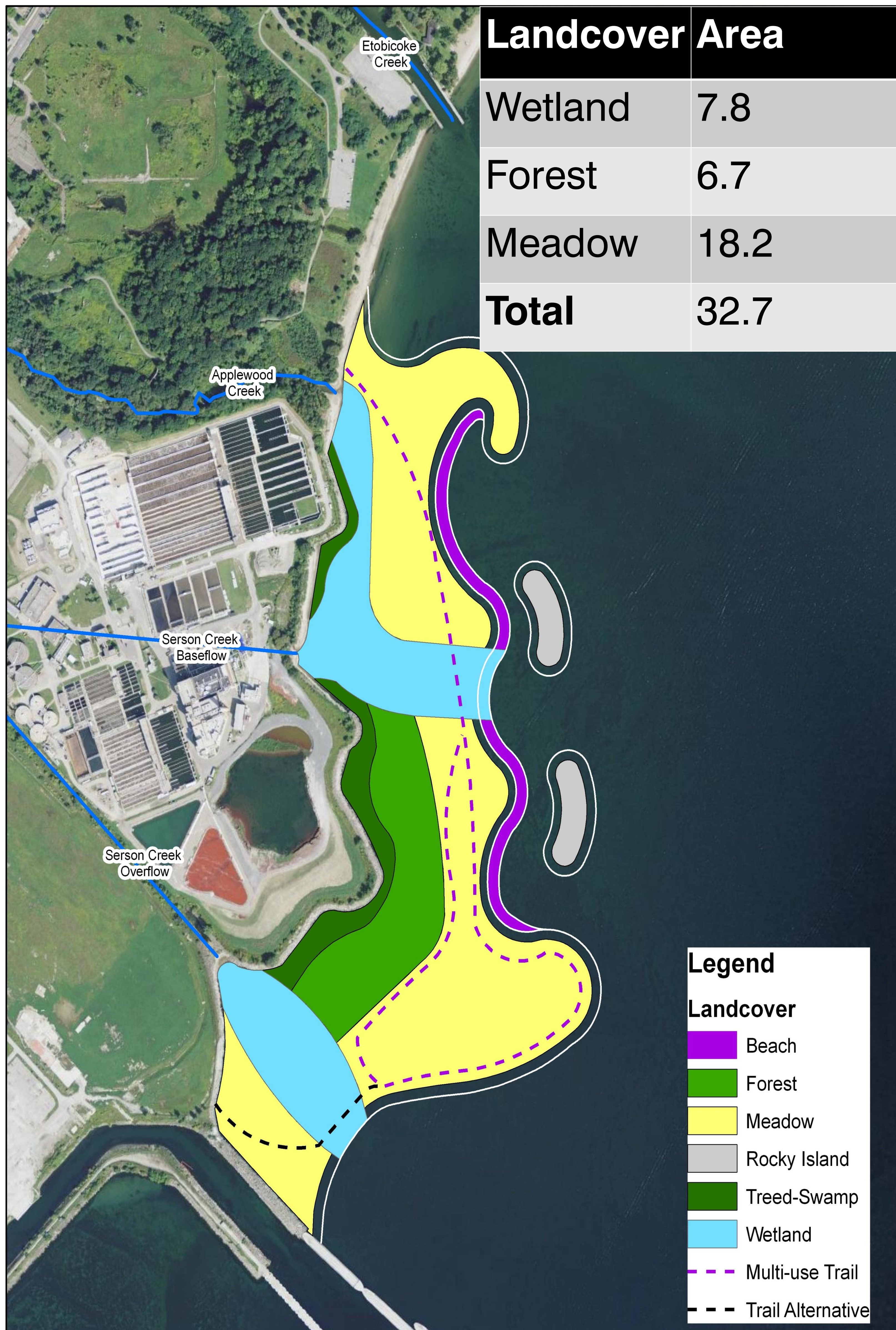




Alternative 2: Headland Beach

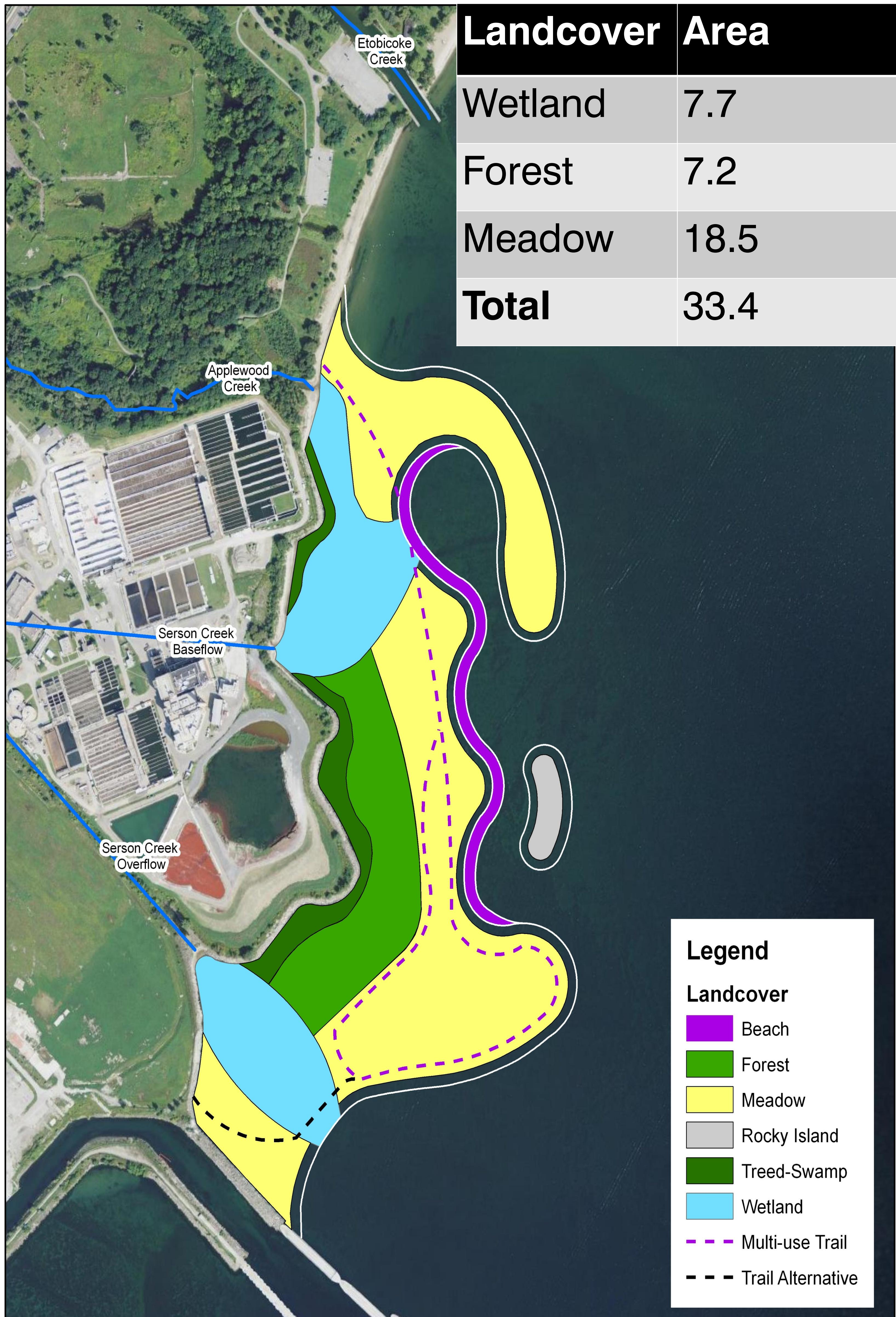


Alternative 3: Island Beach A

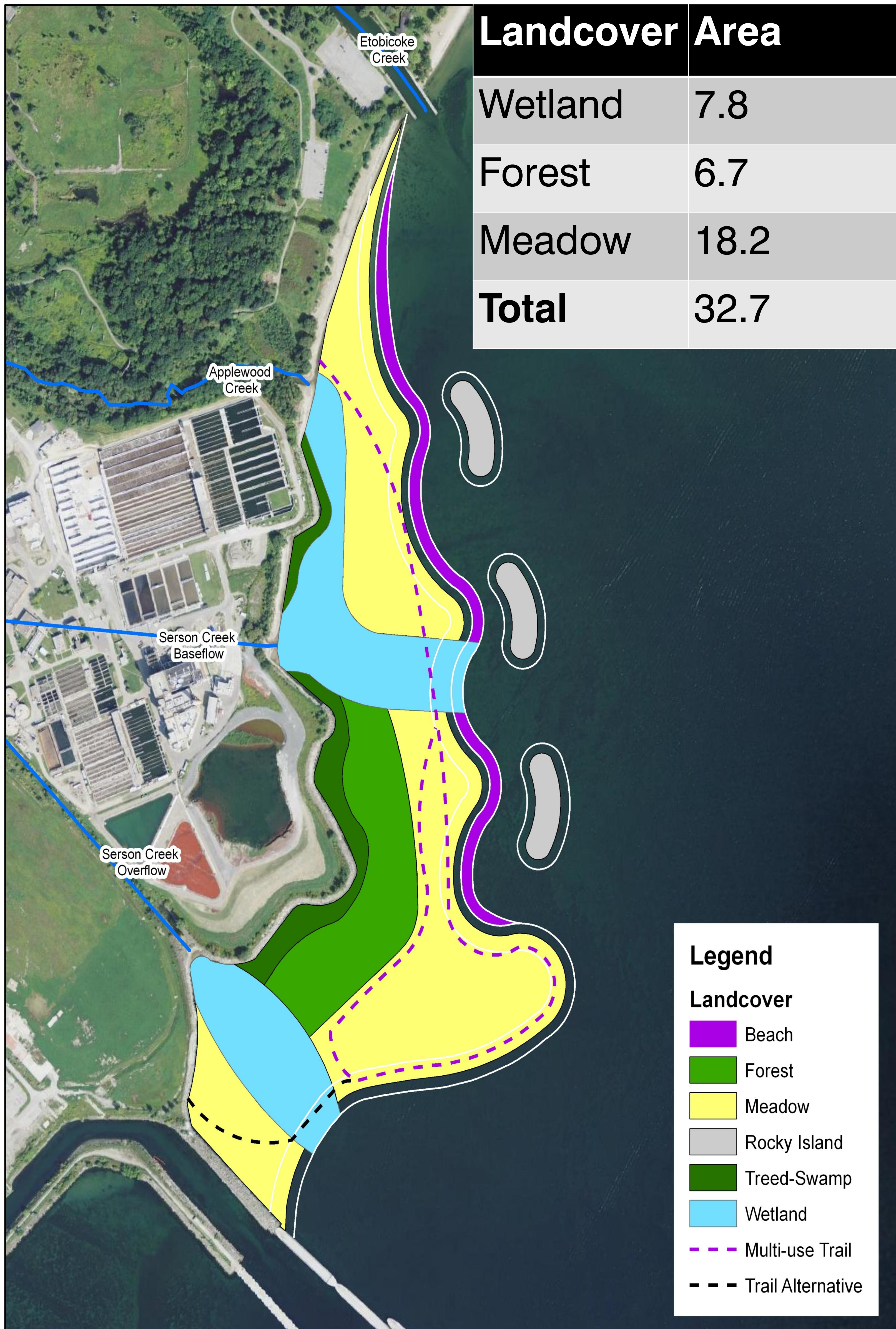




Alternative 4: Island Beach B



Alternative 5: Island Beach C





How we dealt with suggested revisions to the alternatives

- Consider a hybrid of the embayment and island alternatives with a break through option to alleviate algae growth concerns
 - *Embayments typically produce conditions suitable for aquatic vegetation to establish, rather than algae*
 - *A break could be design rather than functional considerations*
- Include more sand in the transition area between the terrestrial and beach area
 - *Very rough wave climate area*
 - *Sand too close to the beach will wash away*
 - *Sand beyond the wave activity will vegetate and become terrestrial habitat.*
- Overall, general consensus that the range of options seemed reasonable



Comparative Evaluation: Criteria and Indicators

- Measure ability of alternative to meet project objectives
- Focused on measuring differences between alternatives
- Reflect information presented for alternatives.



LWC Comparative Evaluation

- For each indicator, each alternative given qualitative score ('least preferred', 'moderately preferred', 'most preferred')
- Objectives, criteria and indicators considered equally important – no weighting
- Public and agency input sought on comparative evaluation



Comparative Evaluation Assumptions

- Same construction plan for all alternatives and use of standard construction mitigative measures
 - Outer berm of purchased material built first
 - Placement of fill between berm and existing shore
 - Grading or land creation area to establish stream connections
 - Planting with native vegetation
 - Provision of trails and other recreation attributes
- Alternatives represent ultimate build out condition so connection to OPG eastern pier may be staged



Evaluation Criteria Used

OBJECTIVE	CRITERIA
Naturalization	Change in diversity of shoreline types
	Ability to create functional habitat blocks
	Ability of alternatives to be self-compensating with respect to fish habitat
Access	Potential for lookout areas
	Potential for public access to water's edge
	Potential for effects on traditional uses of lands by First Nations and Metis
Coordination	Consistency with the Visioning for Inspiration Lakeview
	Consistency with LOISS
	Consistency with Lake Ontario Biodiversity Strategy
	Consistency with MNR Fish Community Goals and Objectives – Lake Ontario
Fiscal Viability	Estimated capital cost
	Annual maintenance costs for naturalized area



Criteria Screened from Evaluation

Criteria and indicators which were evaluated but for which there were no significant differences between the alternatives

Access	Potential for changes to use of waterfront for recreation
	Potential for displacement of built heritage resources due to construction
	Potential effects from construction on marine and land based archaeological resources
Compatibility	Potential for effects to existing WWTF outfalls
	Changes to site security for WWTF
Coordination	Consistency with City of Mississauga Waterfront Parks Strategy (2008)
	Consistency with Marie Curtis Park and Arsenal Lands Master Plan



How we dealt with suggestions on Criteria and Evaluation

Consider adding criteria to address following issues:

- Transportation infrastructure
- Active and interpretive recreation opportunities
- Prevention of odours reaching park
- Attraction of undesirable species
- Provision of view corridors to lake and other vistas
- Universal accessibility
- Fiscal viability & cost of construction and maintenance
- Public safety with respect to recreational boating
- Flooding, water quality and water currents

Most issues already covered in evaluation criteria or can't be measured given alternatives being evaluated



Summary of Evaluation - Naturalization

Objective	Criteria	Revetment	Headland Beach	Island A	Island B	Island C
Naturalization	Change in shoreline character	Least preferred	Moderately preferred	Most preferred	Most preferred	Most preferred
	Ability to create functional habitat blocks	Least preferred	Moderately preferred	Most preferred	Most preferred	Most preferred
	Ability of alternative to be self-compensating with respect to fish habitat	Least preferred	Moderately preferred	Moderately preferred	Most preferred	Moderately preferred
	SUMMARY	<i>Least preferred</i>	<i>Moderately preferred</i>	<i>Most preferred</i>	<i>Most preferred</i>	<i>Most preferred</i>



Summary of Evaluation - Access

Objective	Criteria	Revetment	Headland Beach	Island A	Island B	Island C
Access	Potential for lookout areas	Moderately preferred	Least preferred	Most preferred	Moderately preferred	Most preferred
	Potential for public access to water's edge	Least preferred	Moderately preferred	Most preferred	Most preferred	Most preferred
	Potential for effect from construction on traditional uses of lands by First Nations and Métis	Least preferred	Most preferred	Most preferred	Most preferred	Most preferred
Summary		<i>Least preferred</i>	<i>Moderately preferred</i>	<i>Most preferred</i>	<i>Moderately preferred</i>	<i>Most preferred</i>



Summary of Evaluation - Coordination

Objective	Criteria	Revetment	Headland Beach	Island A	Island B	Island C
Coordination	Consistency with the Visioning for Inspiration Lakeview	Moderately preferred	Most preferred	Most preferred	Most preferred	Most preferred
	Consistency with LOISS	Least preferred	Moderately preferred	Moderately preferred	Moderately preferred	Most preferred
	Consistency with Lake Ontario Biodiversity Strategy	Least preferred	Moderately preferred	Most preferred	Most preferred	Most preferred
	Consistency with MNR Fish Community Goal & Objectives – L. Ontario	Least preferred	Most preferred	Most preferred	Most preferred	Most preferred
Summary		Least preferred	Moderately preferred	Most preferred	Most preferred	Most preferred



Summary of Evaluation – Fiscal Viability

Objective	Criteria	Revetment	Headland Beach	Island A	Island B	Island C
Fiscal Viability	Estimated Capital Cost	Most preferred	Moderately preferred	Least preferred	Least preferred	Moderately preferred
	Annual maintenance cost for naturalized area	Most preferred	Least preferred	Least preferred	Least preferred	Least preferred
Summary		Most preferred	Moderately preferred	Least preferred	Least preferred	Moderately preferred



Summary of Evaluation

Objective	Revetment	Headland	Island A	Island B	Island C
Naturalization	Least preferred	Moderately preferred	Most preferred	Most preferred	Most preferred
Access	Least preferred	Moderately preferred	Most preferred	Moderately preferred	Most preferred
Coordination	Least preferred	Moderately preferred	Most preferred	Most preferred	Most preferred
Fiscal Viability	Most preferred	Moderately preferred	Least preferred	Least preferred	Moderately preferred
OVERALL	<i>Least preferred</i>	<i>Moderately preferred</i>	<i>Moderately preferred</i>	<i>Moderately preferred</i>	<i>Most preferred</i>



Preferred Alternative – Island C – in Context of Other Waterfront Parks



Cobble Beach & Islands



Meadow



Forest



Treed-Swamp



Revetment





Refinements to Preferred Alternative

- For construction determine:
 - Construction plan
 - Access route(s) from QEW to Lakeshore
 - Site access route(s) from Lakeshore to construction area
- For ultimate design determine location, character and size of:
 - Stream channels through new park area
 - Wetlands
 - Measures to manage invasive species and climate change
 - Site topography
 - Shoreline stabilization works



Next Steps prior to Draft EA Submission

- **Refine preferred alternative** to include:
 - Construction plan
 - Construction access from QEW to Lakeshore and from Lakeshore to shoreline
 - Design details related to stream channels, shoreline works, etc.
- **Detailed assessment** of preferred alternative focused on construction and establishment phases
- **Identification of mitigation measures** to lessen negative effects and/or enhance positive effects
- **Develop detailed cost estimate and funding strategy** to be reviewed against the initial cost and funding models developed at the Feasibility Study stage to confirm the financial viability of the LWC



EA Approval Process

- Draft EA available for public and agency review late June 2013
- Final EA available for public and agency review and approval late 2013
- Report to Region of Peel Council late 2013
- MOE review period approximately 6 months



Post EA Approval Steps

After EA approval is received detailed design activities can commence and will include:

- Refinement of construction plan and construction schedule
- Design of trails, lookouts and other passive recreation features
- Development of planting plan and approach to planting